



ej

Channel, Grate & Pit Systems







Our people:
Our core strength.

Along with our distributors and agents, we take pride in what we do. We are honest and genuinely committed to creating and maintaining real, long-lasting relationships. We work where you work, we live where you live. We hire the right people, and give them superior knowledge. It is our employees' world-class knowledge and expertise that continues to keep us leading in our globally competitive industry.

We are fortunate to have a long history of attracting and retaining outstanding people. Our workforce is diverse, knowledgeable and loyal and often includes multiple generations from the same family. Our passionate and dedicated teams repeatedly earn recognition for their high degree of professionalism.

Table of Contents

Additional Solutions & Information	7
STORMTROOPER™ 100mm	13
STORMTROOPER™ 150mm	17
STORMTROOPER™ 200mm	21
STORMTROOPER™ 300mm	25
ELECTROFLO™ Pits & Risers	29

Section	Category	Sub Category	Page
1	Additional Solutions and Information	We are EJ	8
		A Legacy is Cast	9
		Product Lines	10
		Load Classification	11
2	STORMTROOPER™ 100mm Channel & Grate Systems	Quick Select	14
		Full Range	15
3	STORMTROOPER™ 150mm Channel & Grate Systems	Quick Select	18
		Full Range	19
4	STORMTROOPER™ 200mm Channel & Grate Systems	Quick Select	22
		Full Range	23
5	STORMTROOPER™ 300mm Channel & Grate Systems	Quick Select	26
		Full Range	27
6	ELECTROFLO™ Polymer Concrete Pits and Risers	300 x 300	30
		450 x 450	31
		600 x 600	32
		900 x 900	33



Quality
ISO 9001



OceanaMark
AS3996
Certification

Our product and service
quality is officially assured as
EJ holds the international
Quality Certification ISO 9001
and the IAPMO OceanaMark.

Introducing Channel, Grate & Pit Systems

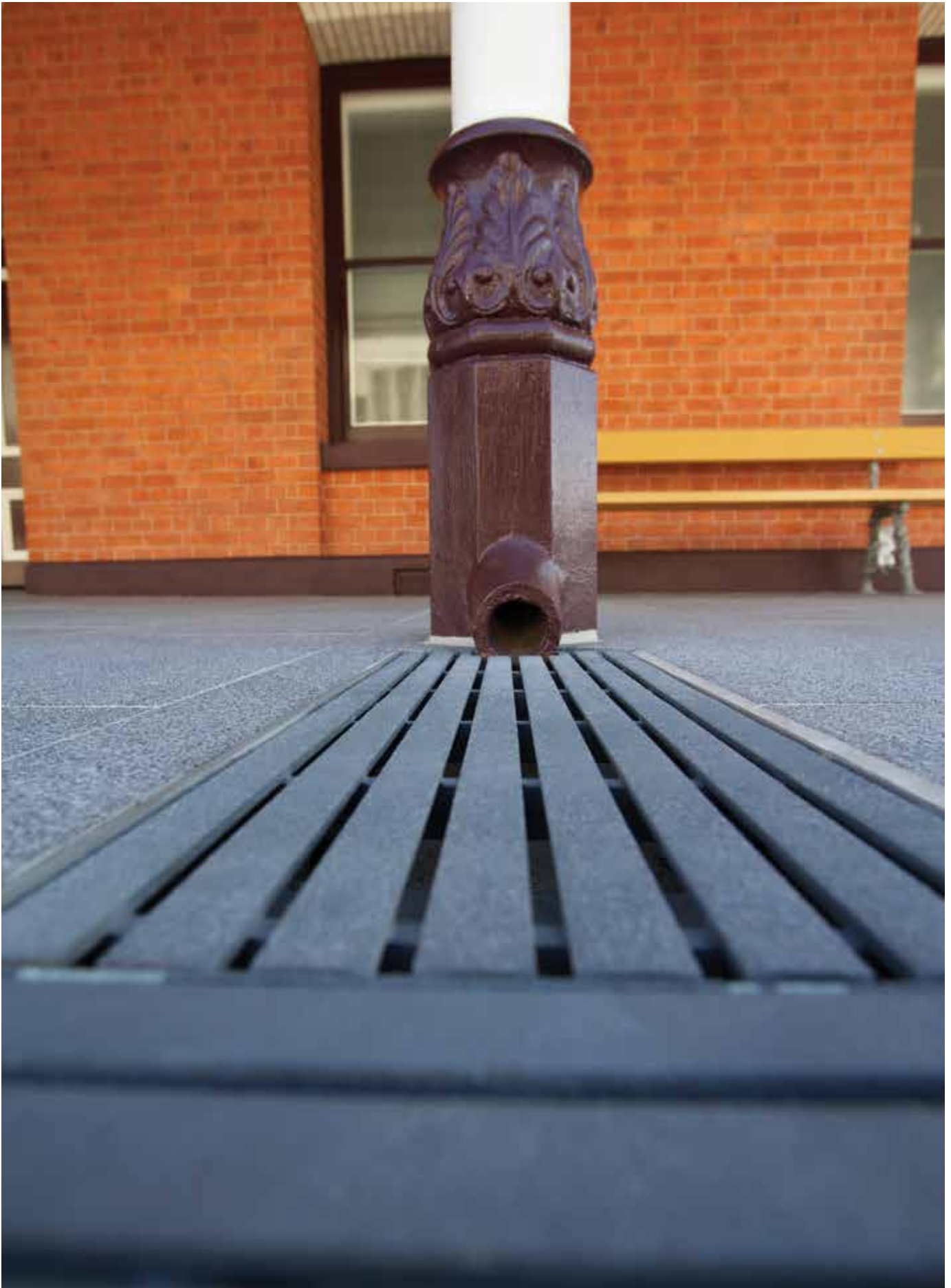


Queensland Factory, Brisbane, Australia.

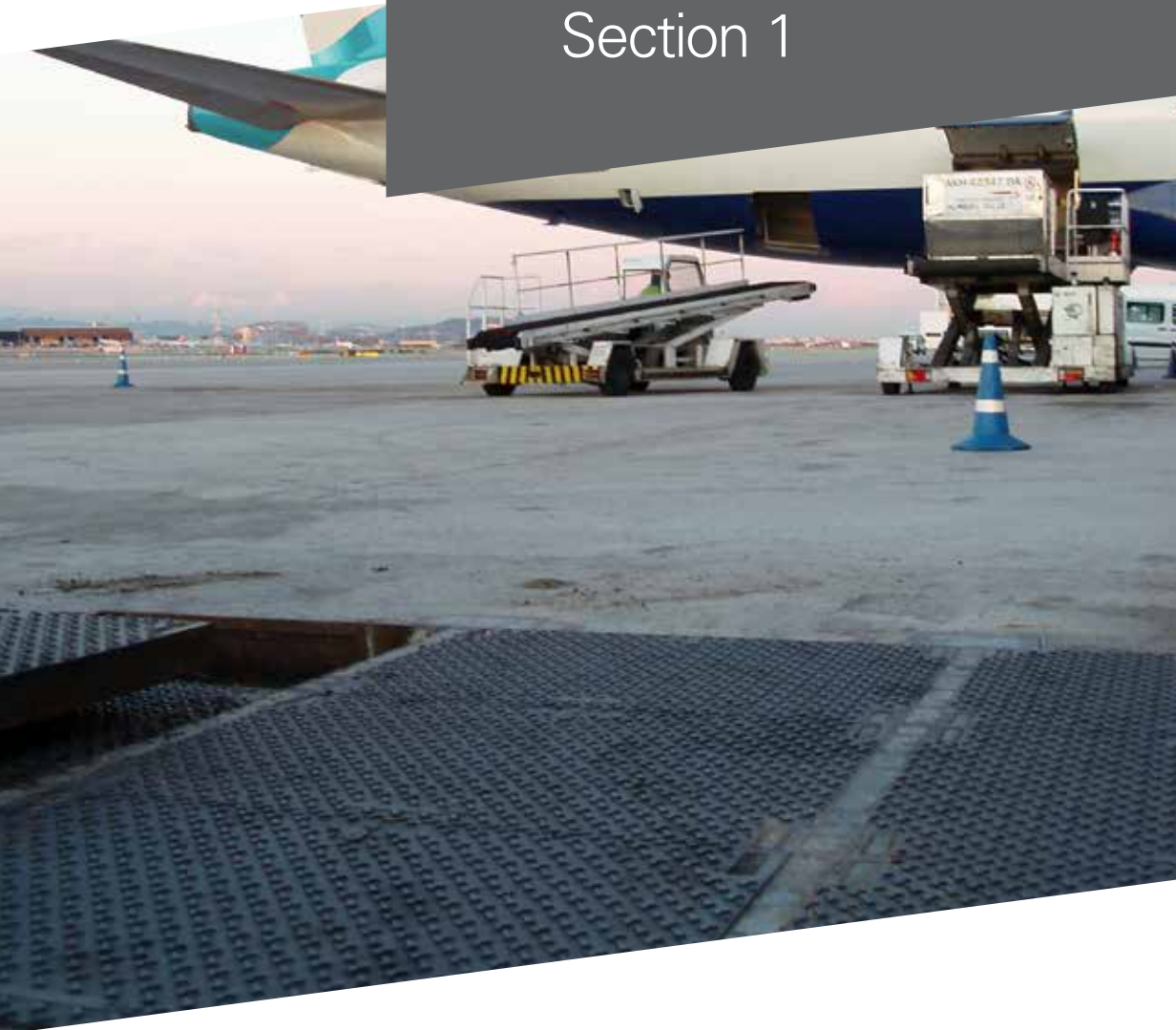
In drainage channel technology and engineering, there is no more efficient than the range from EJ.

From this catalogue, you'll be able to specify from the comprehensive and incredibly efficient STORMTROOPER™ channel and grate range, which includes our new generation polymer concrete trenches. These are made from an improved, high quality, lifelong compound to withstand heavy-duty traffic and to endure the harshest conditions nature can throw at them. Incorporated into the poly-concrete range are the ELECTROFLO™ pits, covers and risers from EJ, specifically designed in poly-concrete for its insulating qualities for cable/electricity carriage but on the other hand, perfect for use in heavy volume drainage applications.

EJ is the world leader in access grates, covers and drainage infrastructure and accessories. This is the name on the streets, the name you can trust.



Additional Solutions and Information Section 1



We are EJ

EJ is the leader in the design, manufacture and distribution of access solutions for water, sewer, drainage, telecommunications and utility networks worldwide.

EJ offers the broadest range of high-quality infrastructure access solutions. Our distribution coverage continues to expand into new markets. As an entrepreneurial family-owned company, we have a long, successful heritage of meeting change with innovation.

Since our founding in 1883, we have grown by providing access solutions to meet the demands of the world's growing infrastructure. Fueled by innovation, our design, manufacturing, and distribution processes continue to evolve—creating solutions that provide an unparalleled customer experience.

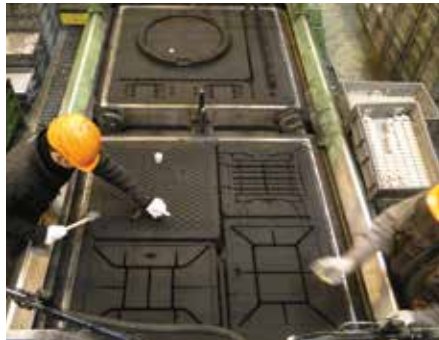
EJ is a family-owned company that has a long history of fostering strong customer relationships. These relationships are supported with personal contact from company representatives, a complete offering of product literature, a comprehensive website (ejco.com), trade show exhibits, as well as seminars and training opportunities. All these services help to provide customers with the product information required for successful projects.

Wherever you are, EJ provides access solutions that adhere to the local specifications in a timely and competitive manner. We also work with our customers to produce access solutions to meet their specialised requirements. Our sales staff around the world understands the unique needs of your market.

Our people: our core strength. While working together, employees use their expertise, knowledge, and ability to achieve positive results. Core values at EJ include: safety and security, honesty and integrity, environmental responsibility, respect for others, quality and excellence and social responsibility. These core values are imbedded into our culture and are practiced daily throughout the organisation.

Our state-of-the-art manufacturing plants employ world class machinery, systems and processes to produce specified products efficiently and on time.

Wherever you are, whatever your specific requirement might be, EJ has the best access solutions for your infrastructure project.



Product Range

EJ offers a comprehensive portfolio of products and services; including municipal and construction castings, fabricated products, water distribution solutions, and other infrastructure access solutions.

Quality Manufacturing

Integrating technology, lean processes and over a century of experience in crafting metal castings and fabrications keeps our facilities performing at peak efficiencies.

Distribution Network

Access solution products, including municipal and construction castings, are available worldwide at our internal stocking locations and from our extensive network of distribution partners.

A Legacy is Cast



William E. Malpass (standing back right, next to window) with employees during the 1920s.

The EJ legacy dates back to 1883 when William E. Malpass and his father-in-law Richard W. Round established a foundry on the shores of Lake Charlevoix, in the town of East Jordan, Michigan, USA. This foundry was called East Jordan Iron Works and originally produced cast parts for the lumber industry, machinery, ships, agricultural equipment and railroads.

In the 1920s, when the lumbering era came to a close, the company expanded into new markets allowing continued success in changing times and shifted to the production of street castings, water works valves, fire hydrants and various industrial castings.

During World War II the foundry produced castings for the war effort.

In the 1950s semi-automation was introduced into the foundry. During the 60s, the third generation converted the foundry to an automated high-pressure molding line. By integrating automatic sand processing and mechanised casting handling systems, the company was

operating the largest automated molding line in the United States and maximised production capabilities.

Since the mid-1980s the business has been led by the fourth generation descendants of the Malpass family. They have transformed the Midwest business into an international leader of construction castings.

In the 1990s, new acquisitions throughout the United States allowed the company to expand product lines, sales offices, distribution capabilities and customer service across North America. In 2001, a new foundry was built in Oklahoma, providing additional capacity to service the construction castings market.

The 21st century had barely introduced itself when East Jordan Iron Works began turning its attention to expansion in other parts of the world, including Cavanagh Foundry in Ireland (2000), Norinco in France (2004), McCoy Construction Castings in Canada (2006), and HaveStock in Australia (2010).

In 1999, the fifth generation of the Malpass family began joining the company to continue the strong family commitment to its success. Dedicated to maintaining the company's long-established culture and values, they are significantly involved in strategies and priorities, bringing a renewed energy and enthusiasm to the company.

In 2012, East Jordan Iron Works and its affiliated companies began doing business using the same name and brand EJ. One global name and brand, supported by a single mission, vision and set of values has unified the company. This action leverages all company resources to improve internal operations, as well as provide superior product offerings and services to its valued customers. EJ has supplied products to infrastructure projects in over 140 countries around the world.

EJ continues to be 100% owned and operated by the Malpass family with corporate headquarters located in East Jordan, Michigan.

Product Lines

Street Castings

- Manhole Frames and Covers
- Curb Inlets and Frames
- Utility Castings
- Airport and Port Authority Castings
- Tree Grates
- Trench Grates
- Drainage Grates
- DURALAST® Detectable Warning Plates



Fabricated Products

- Grating
- Riser Rings
- INFRA-RISER® Adjustment Risers
- Aluminium Access Hatches
- Custom Fabrications



Water Products

- WaterMaster® Fire Hydrants
- FlowMaster® RW Gate Valves
- Valve Boxes
- Metre Boxes

Innovative Access Solutions

- Captive Hinge Grates/Covers
- ERGO® and ERGO® XL Access Assemblies
- Ductile Hinged Hatch Access Assemblies
- 5624 Heavy Duty Hinged Grates
- SELFLEVEL® Access Assemblies
- REVOLUTION® Access Assemblies
- ERMATIC® Modular Covers
- Multi-Leaf® Hinged Covers
- CAMPRESSION® Access Assemblies
- Composite Access Covers



Innovative Features

- LOCKEO® Security Feature
- Mechanical Strut Lift Assist
- Cam Lock
- EON LOCK® Designs
- EPIC® Pick Bar
- MPIC® Multi-tool Pick Bar



LOAD CLASSIFICATION (AS3996)

Access covers and grates shall be designated by classes A, B, C, D, E, F and G according to load capacity as set out in the table below. The design loads as specified below, shall be used for testing.

The appropriate class for a cover or grate depends upon the place of installation. Some places of installation, relative to class, are outlined below. The selection of the appropriate class is the responsibility of the designer and where there is doubt the stronger class shall be selected.

Load Classifications of Covers and Grates

AS3996:2006 – ACCESS COVERS, ROAD GRATES & FRAMES

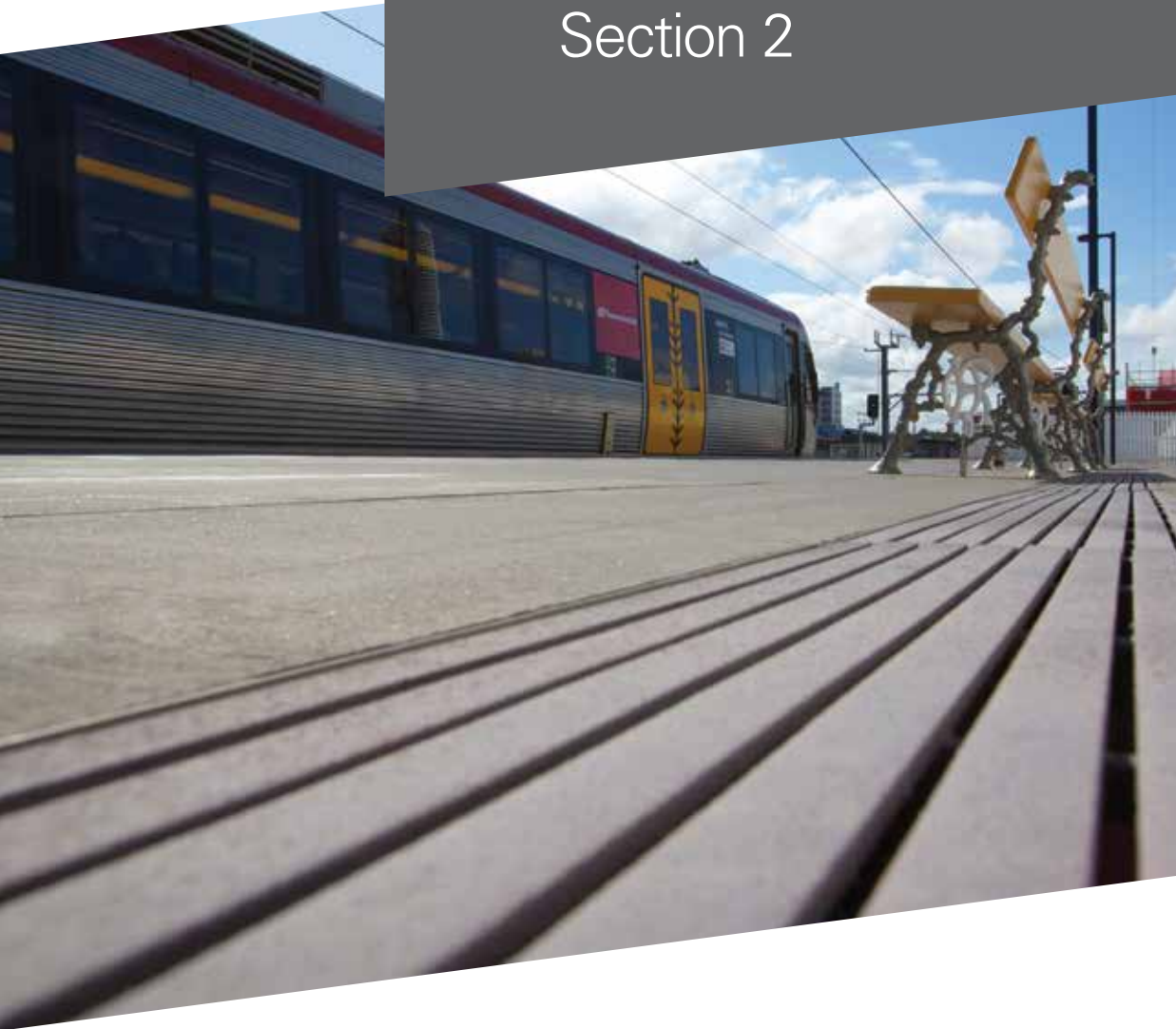
Rating	CLASS A	CLASS B	CLASS C	CLASS D	CLASS E	CLASS F	CLASS G
Typical Use	Areas (including footways) accessible only to pedestrians and pedal cyclists, and closed to other traffic (extra light duty)	Areas (including footways and light tractor paths) accessible to vehicles (excluding commercial vehicles) or livestock (light duty)	Malls and areas open to slow moving commercial vehicles (medium duty)	Carriageways of roads and areas open to commercial vehicles (heavy duty)	General docks and aircraft pavements (extra heavy duty - E)	Docks and aircraft pavements subject to high wheel loads (extra heavy duty - F)	Docks and aircraft pavements subject to very high wheel loads (extra heavy duty - G)
Nominal Wheel Loading (kg)	330	2,670	5,000	8,000	13,700	20,000	30,000
Serviceability Design Load (kN)	6.7	53	100	140	267	400	600
Ultimate Limit State Design Load (kN)	10	80	150	210	400	600	900

NOTES:

- Nominal wheel loads are given for guidance only. Consideration should be given to the type, size and pneumatic pressure of the load applied.
- Class B design loads exceed AS 5100.2 requirements for footway loading.
- Class D design loads exceed AS 5100.2 requirements for a W80 wheel load.
- Class C units are based on intermediate load.
- The serviceability load is set at 2/3 of the ultimate limit state design load.
- A force of 1 kN approximately equal to the weight of 100kg.

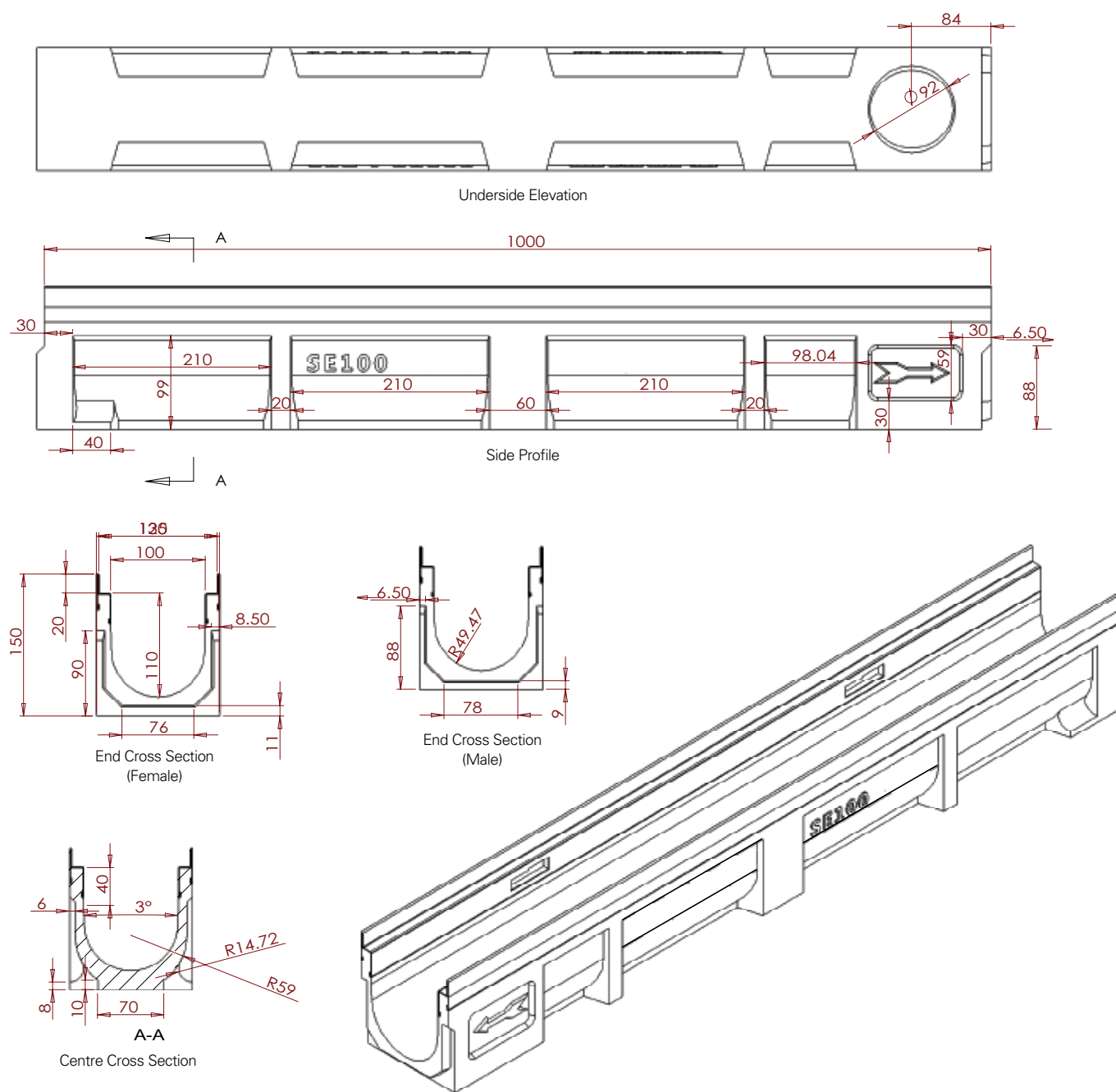


STORMTROOPER™ 100mm Channel & Grate Systems Section 2



STORMTROOPER™ 100mm

QUICK SELECT



Code	C/O (mm)	Internal Dim (mm) L x W x H	Outside Dim (mm) L x W x H	Class (AS3996)	Total Weight (kg)	Grate Material
SE100-Z02-D HP	100	1000 x 100 x 110	1000 x 130 x 150	D	19.50	HEELPROOF™ DI
SE100-Z02-D	100	1000 x 100 x 110	1000 x 130 x 150	E	21.10	Transverse DI
SE100-Z02D-G	100	1000 x 100 x 110	1000 x 130 x 150	A	14.70	Steel
SE100-Z02S-SS	100	1000 x 100 x 110	1000 x 130 x 150	A	14.70	Stainless Steel

STORMTROOPER™ 100mm FULL RANGE



Longitudinal HEELPROOF™ Trench Grate

Ductile Iron HEELPROOF™ & Steel Edge

Code	C/O (mm)	Internal Dim (mm) L x W x H	Outside Dim (mm) L x W x H	Class (AS3996)	Total Weight (kg)	Grate Material
SE100-Z02-D HP	100	1000 x 100 x 110	1000 x 130 x 150	D	19.50	HEELPROOF™ DI
SE100-Z03-D HP	100	1000 x 100 x 170	1000 x 130 x 210	D	22.90	HEELPROOF™ DI
SE100-Z04-D HP	100	1000 x 100 x 230	1000 x 130 x 270	D	26.70	HEELPROOF™ DI



Transverse Bar Trench Grate

Ductile Iron Transverse & Steel Edge

Code	C/O (mm)	Internal Dim (mm) L x W x H	Outside Dim (mm) L x W x H	Class (AS3996)	Total Weight (kg)	Grate Material
SE100-Z02-D	100	1000 x 100 x 110	1000 x 130 x 150	E	21.10	Transverse DI
SE100-Z03-D	100	1000 x 100 x 170	1000 x 130 x 210	E	24.50	Transverse DI
SE100-Z04-D	100	1000 x 100 x 230	1000 x 130 x 270	E	28.30	Transverse DI

STORMTROOPER™ 100mm FULL RANGE



Galvanised Punched Steel Trench Grate

Galvanised Punched Steel & Steel Edge

Code	C/O (mm)	Internal Dim (mm) L x W x H	Outside Dim (mm) L x W x H	Class (AS3996)	Total Weight (kg)	Grate Material
SE100-Z02-D-G	100	1000 x 100 x 110	1000 x 130 x 150	A	14.70	Steel
SE100-Z03-D-G	100	1000 x 100 x 170	1000 x 130 x 210	A	18.10	Steel
SE100-Z04-D-G	100	1000 x 100 x 230	1000 x 130 x 270	A	21.90	Steel

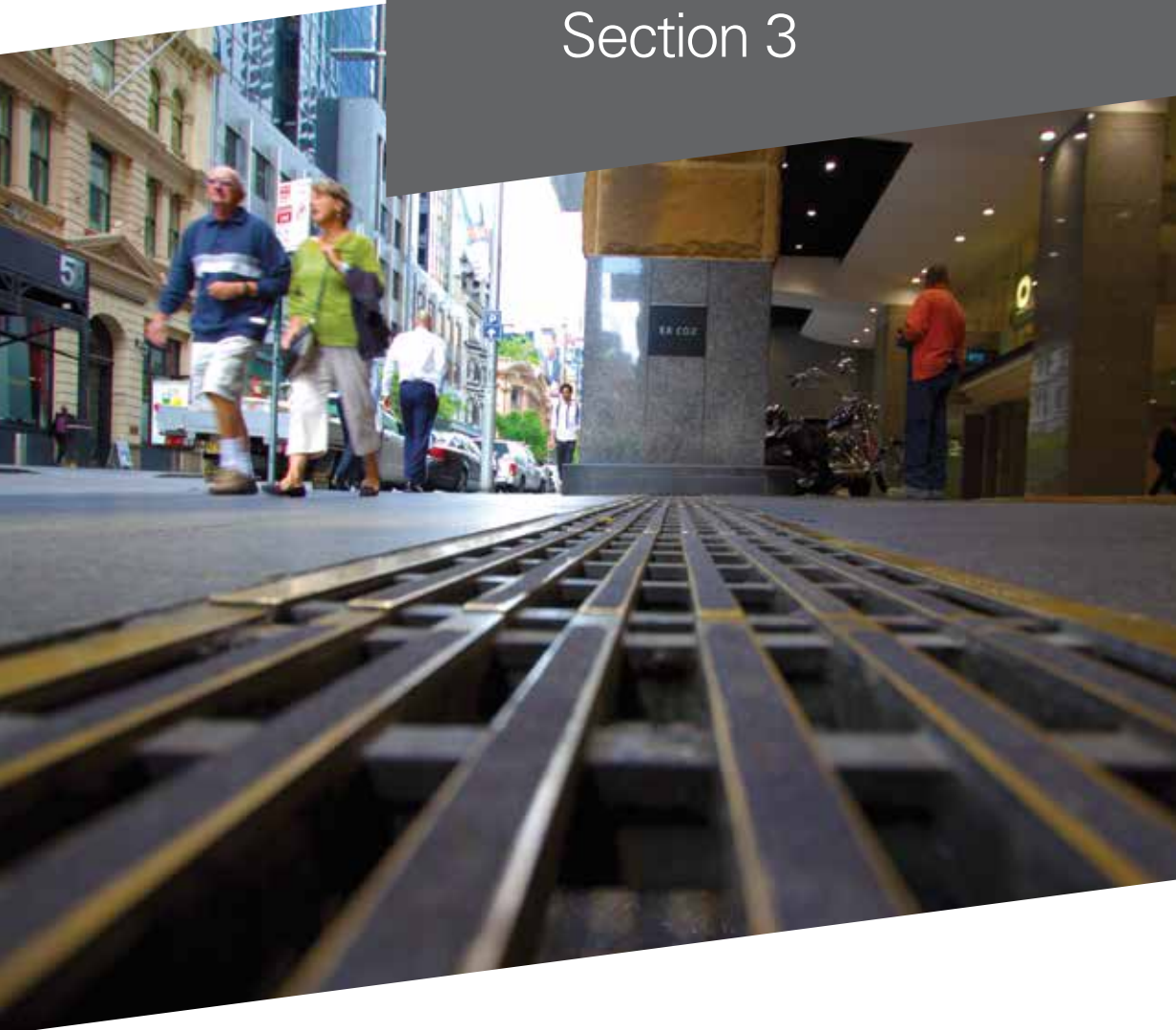


Stainless Steel HEELPROOF™ Trench Grate

Stainless Steel HEELPROOF™ & Steel Edge

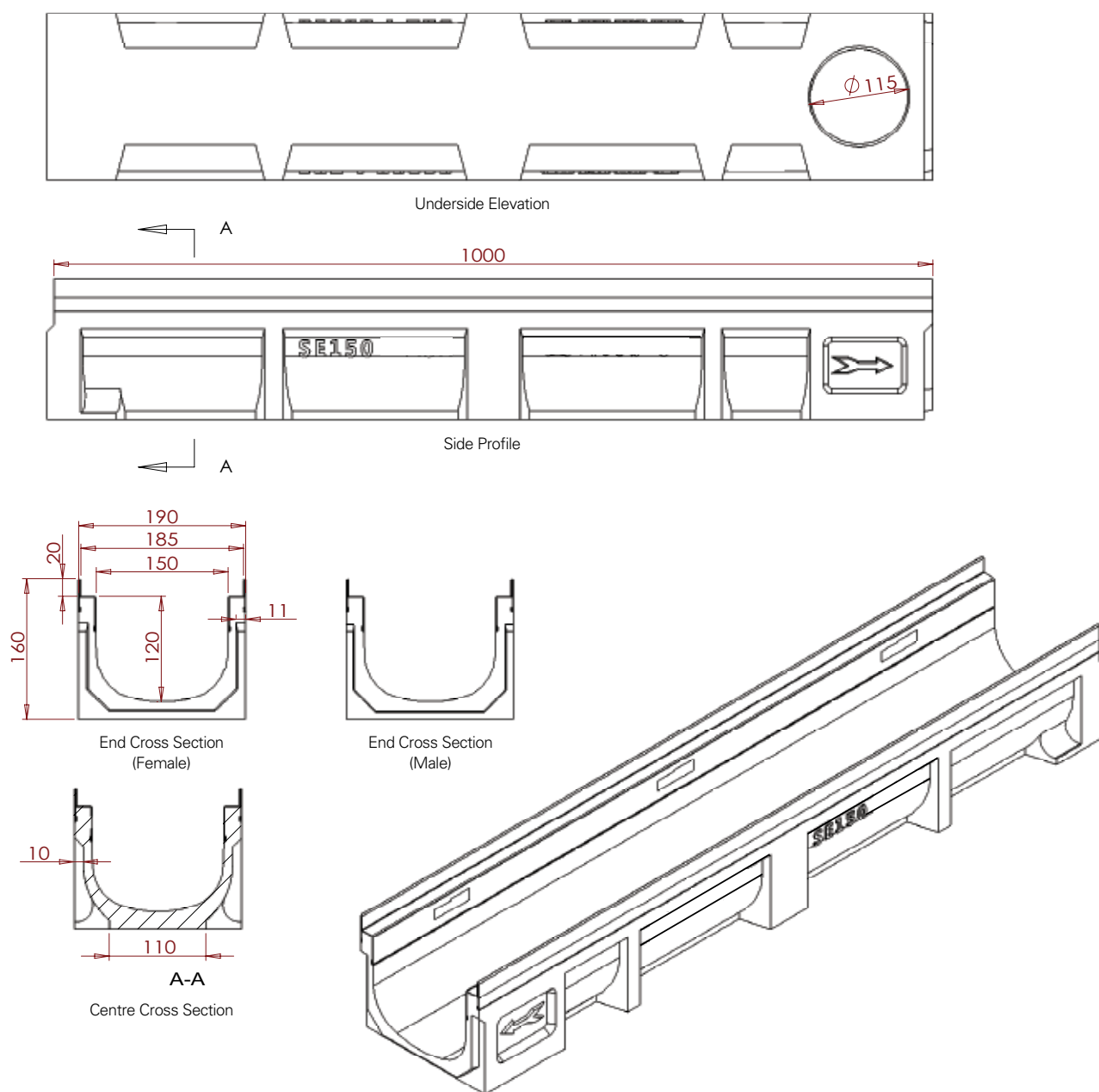
Code	C/O (mm)	Internal Dim (mm) L x W x H	Outside Dim (mm) L x W x H	Class (AS3996)	Total Weight (kg)	Grate Material
SE100-Z02-S-SS	100	1000 x 100 x 110	1000 x 130 x 150	A	14.70	Stainless Steel
SE100-Z03-S-SS	100	1000 x 100 x 170	1000 x 130 x 210	A	18.10	Stainless Steel
SE100-Z04-S-SS	100	1000 x 100 x 230	1000 x 130 x 270	A	21.90	Stainless Steel

STORMTROOPER™ 150mm Channel & Grate Systems Section 3



STORMTROOPER™ 150mm

QUICK SELECT



Code	C/O (mm)	Internal Dim (mm) L x W x H	Outside Dim (mm) L x W x H	Class (AS3996)	Total Weight (kg)	Grate Material
SE150-Z01-D-HP	150	1000 x 150 x 120	1000 x 198 x 160	E	34.50	HEELPROOF™ DI
SE150-Z01-D	150	1000 x 150 x 120	1000 x 190 x 160	E	34.50	Transverse DI
SE150-Z01-D-G	150	1000 x 150 x 120	1000 x 198 x 160	A	29.70	Steel
SE150-Z01-A	150	1000 x 150 x 120	1000 x 190 x 160	A	29.50	Stainless Steel

STORMTROOPER™ 150mm FULL RANGE



Longitudinal HEELPROOF™ Trench Grate

Ductile Iron HEELPROOF™ & Steel Edge

Code	C/O (mm)	Internal Dim (mm) L x W x H	Outside Dim (mm) L x W x H	Class (AS3996)	Total Weight (kg)	Grate Material
SE150-Z01-D-HP	150	1000 x 150 x 120	1000 x 198 x 160	E	34.50	HEELPROOF™ DI
SE150-Z02-D-HP	150	1000 x 150 x 180	1000 x 198 x 220	E	39.00	HEELPROOF™ DI
SE150-Z03-D-HP	150	1000 x 150 x 240	1000 x 198 x 280	E	44.50	HEELPROOF™ DI
SE150-Z04-D-HP	150	1000 x 150 x 300	1000 x 198 x 340	E	52.00	HEELPROOF™ DI



Transverse Bar Trench Grate

Steel Edge

Code	C/O (mm)	Internal Dim (mm) L x W x H	Outside Dim (mm) L x W x H	Class (AS3996)	Total Weight (kg)	Grate Material
SE150-Z01-D	150	1000 x 150 x 120	1000 x 190 x 160	E	29.70	Transverse DI
SE150-Z02-D	150	1000 x 150 x 180	1000 x 190 x 220	E	33.90	Transverse DI
SE150-Z03-D	150	1000 x 150 x 240	1000 x 190 x 280	E	38.50	Transverse DI
SE150-Z04-D	150	1000 x 150 x 300	1000 x 190 x 340	E	43.40	Transverse DI

STORMTROOPER™ 150mm
FULL RANGE



Stainless Steel HEELPROOF™ Trench Grate

Stainless Steel HEELPROOF™ & Steel Edge

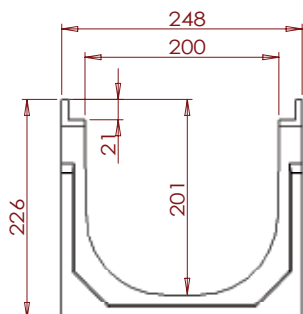
Code	C/O (mm)	Internal Dim (mm) L x W x H	Outside Dim (mm) L x W x H	Class (AS3996)	Total Weight (kg)	Grate Material
SE150-Z01-S-SS	150	1000 x 150 x 120	1000 x 190 x 160	A	29.50	Stainless Steel
SE150-Z02-S-SS	150	1000 x 150 x 180	1000 x 190 x 220	A	33.70	Stainless Steel
SE150-Z03-S-SS	150	1000 x 150 x 240	1000 x 190 x 280	A	38.30	Stainless Steel



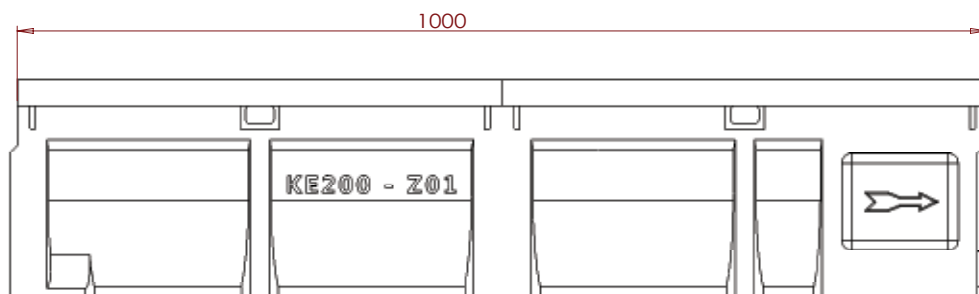
STORMTROOPER™ 200mm Channel & Grate Systems Section 4



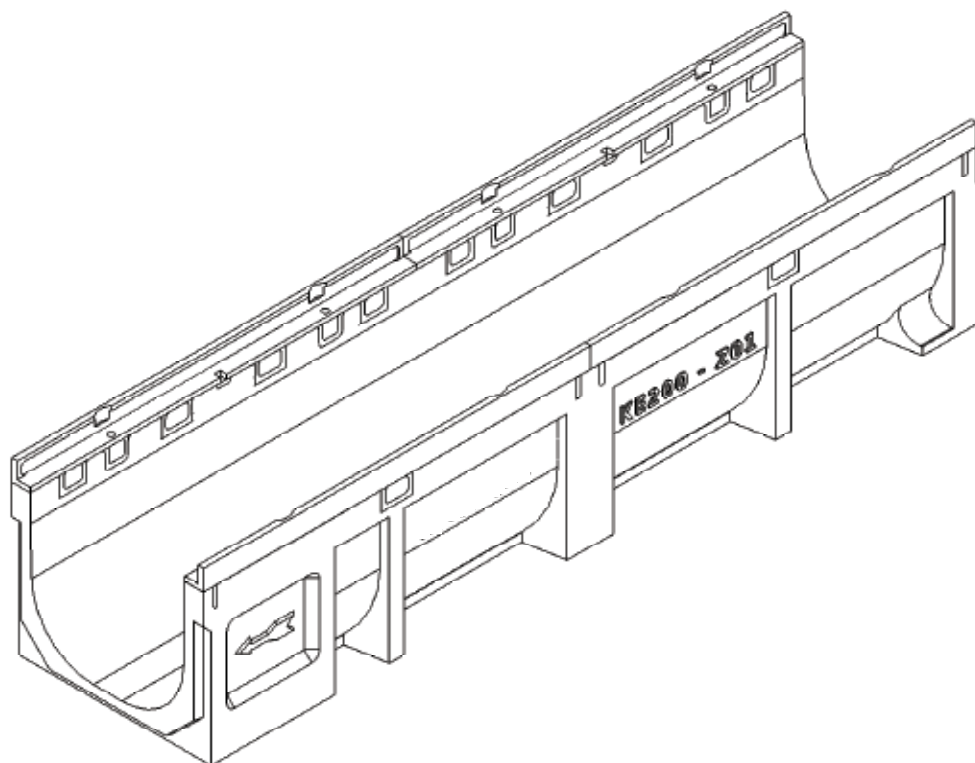
STORMTROOPER™ 200mm QUICK SELECT



End Cross Section



Side Profile



Code	C/O (mm)	Internal Dim (mm) L x W x H	Outside Dim (mm) L x W x H	Class (AS3996)	Total Weight (kg)	Grate Material
KE200-Z01-D HP	200	1000 x 200 x 180	1000 x 248 x 225	E	51.40	HEELPROOF™ DI
KE200-Z01-D	200	1000 x 200 x 180	1000 x 248 x 225	E	51.40	Transverse DI

STORMTROOPER™ 200mm FULL RANGE



Longitudinal HEELPROOF™ Trench Grate

Ductile Iron HEELPROOF™ & Cast Iron Edge

Code	C/O (mm)	Internal Dim (mm) L x W x H	Outside Dim (mm) L x W x H	Class (AS3996)	Total Weight (kg)	Grate Material
KE200-Z01-D HP	200	1000 x 200 x 180	1000 x 248 x 225	E	51.40	HEELPROOF™ DI
KE200-Z02-D HP	200	1000 x 200 x 240	1000 x 248 x 285	E	57.10	HEELPROOF™ DI
KE200-Z03-D HP	200	1000 x 200 x 300	1000 x 248 x 345	E	64.40	HEELPROOF™ DI



Transverse Bar Trench Grate

Cast Iron Edge

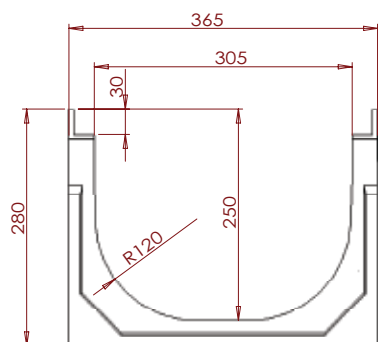
Code	C/O (mm)	Internal Dim (mm) L x W x H	Outside Dim (mm) L x W x H	Class (AS3996)	Total Weight (kg)	Grate Material
KE200-Z01-D	200	1000 x 200 x 180	1000 x 248 x 225	E	51.40	Transverse DI
KE200-Z02-D	200	1000 x 200 x 240	1000 x 248 x 285	E	57.10	Transverse DI
KE200-Z03-D	200	1000 x 200 x 300	1000 x 248 x 345	E	64.40	Transverse DI



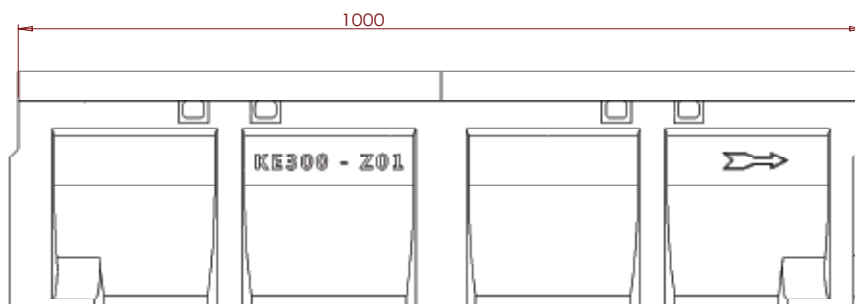
STORMTROOPER™ 300mm Channel & Grate Systems Section 5



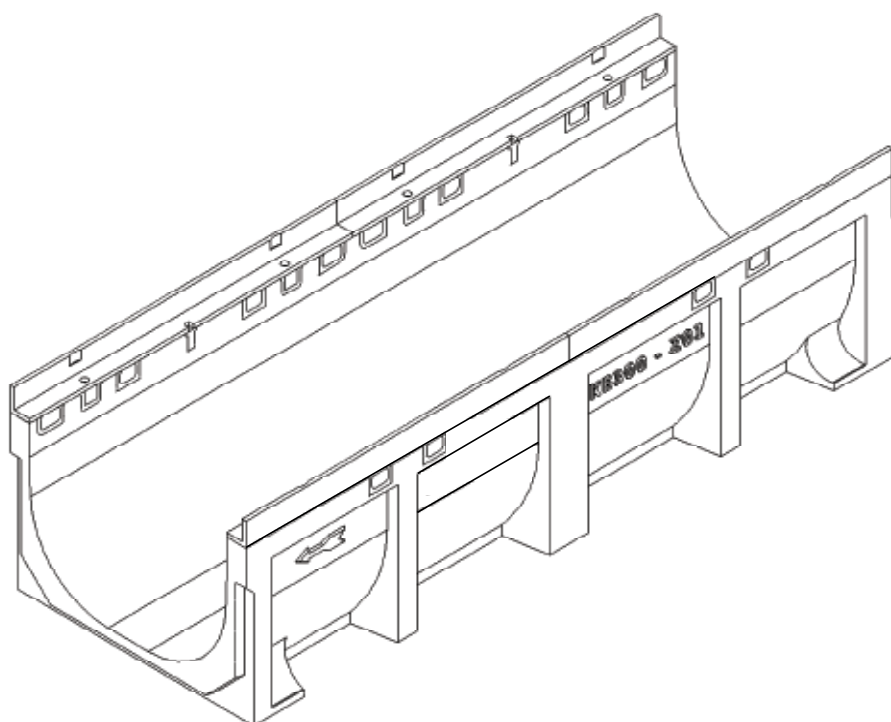
STORMTROOPER™ 300mm QUICK SELECT



End Cross Section



Side Profile



Code	C/O (mm)	Internal Dim (mm) L x W x H	Outside Dim (mm) L x W x H	Class (AS3996)	Total Weight (kg)	Grate Material
KE300-Z01-D HP	300	1000 x 305 x 220	1000 x 365 x 280	E	91.10	HEELPROOF™ DI
KE300-Z01-D	300	1000 x 305 x 220	1000 x 365 x 280	E	91.10	Transverse DI

STORMTROOPER™ 300mm FULL RANGE



Longitudinal HEELPROOF™ Trench Grate

Ductile Iron HEELPROOF™ & Cast Iron Edge

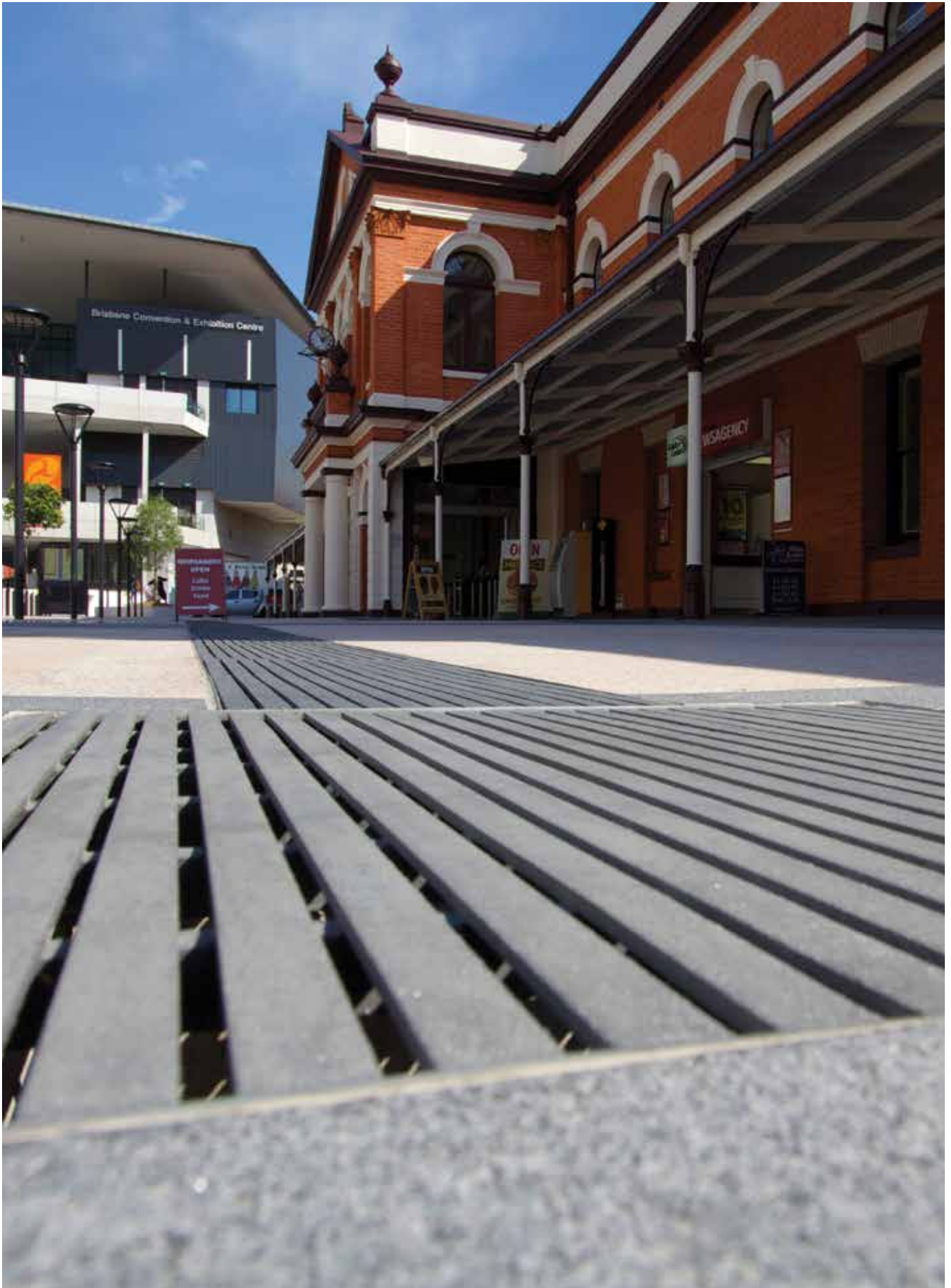
Code	C/O (mm)	Internal Dim (mm) L x W x H	Outside Dim (mm) L x W x H	Class (AS3996)	Total Weight (kg)	Grate Material
KE300-Z01-D HP	300	1000 x 305 x 220	1000 x 365 x 280	E	91.10	HEELPROOF™ DI
KE300-Z02-D HP	300	1000 x 305 x 280	1000 x 365 x 340	E	97.10	HEELPROOF™ DI
KE300-Z03-D HP	300	1000 x 305 x 340	1000 x 365 x 400	E	106.10	HEELPROOF™ DI



Transverse Bar Trench Grate

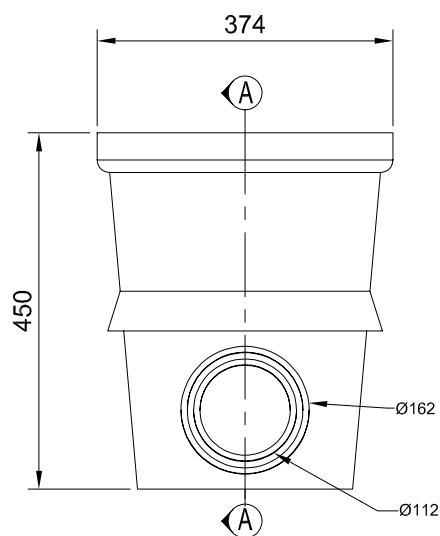
Cast Iron Edge

Code	C/O (mm)	Internal Dim (mm) L x W x H	Outside Dim (mm) L x W x H	Class (AS3996)	Total Weight (kg)	Grate Material
KE300-Z01-D	300	1000 x 305 x 220	1000 x 365 x 280	E	91.10	Transverse DI
KE300-Z02-D	300	1000 x 305 x 280	1000 x 365 x 340	E	97.10	Transverse DI
KE300-Z03-D	300	1000 x 305 x 340	1000 x 365 x 400	E	106.10	Transverse DI

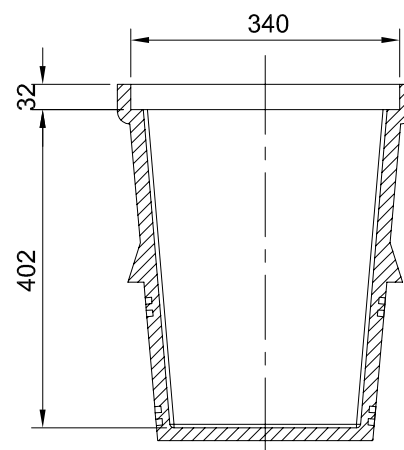
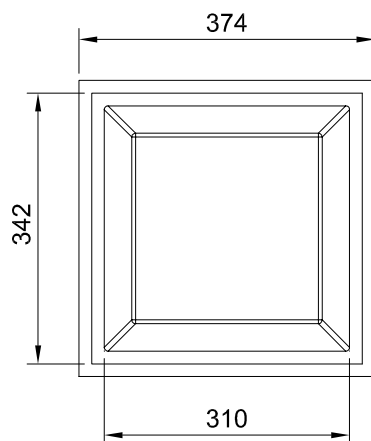


ELECTROFLO™ Polymer Concrete Pits and Risers Section 6

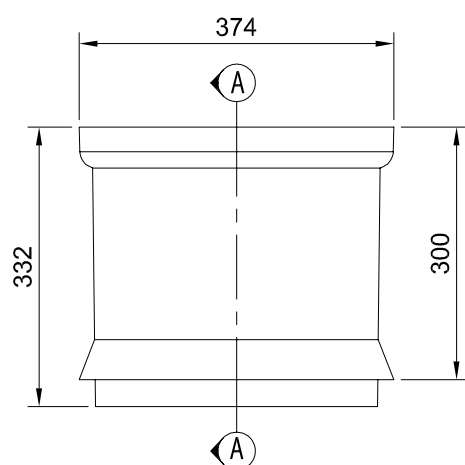


ELECTROFLO™ POLYMER CONCRETE PITS AND RISERS**300 x 300**

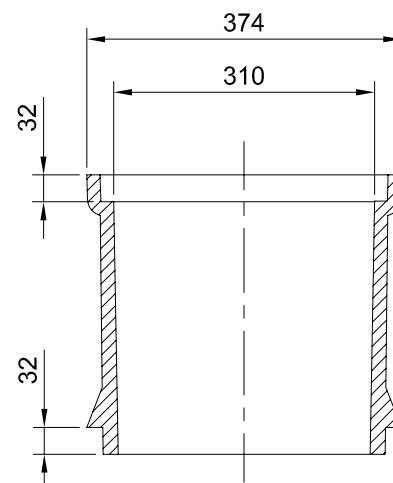
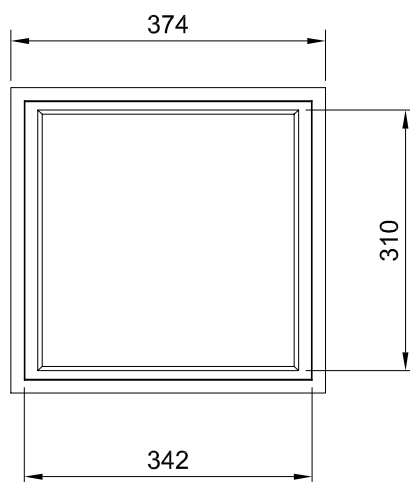
300 x 300 Pit



SECTION A-A



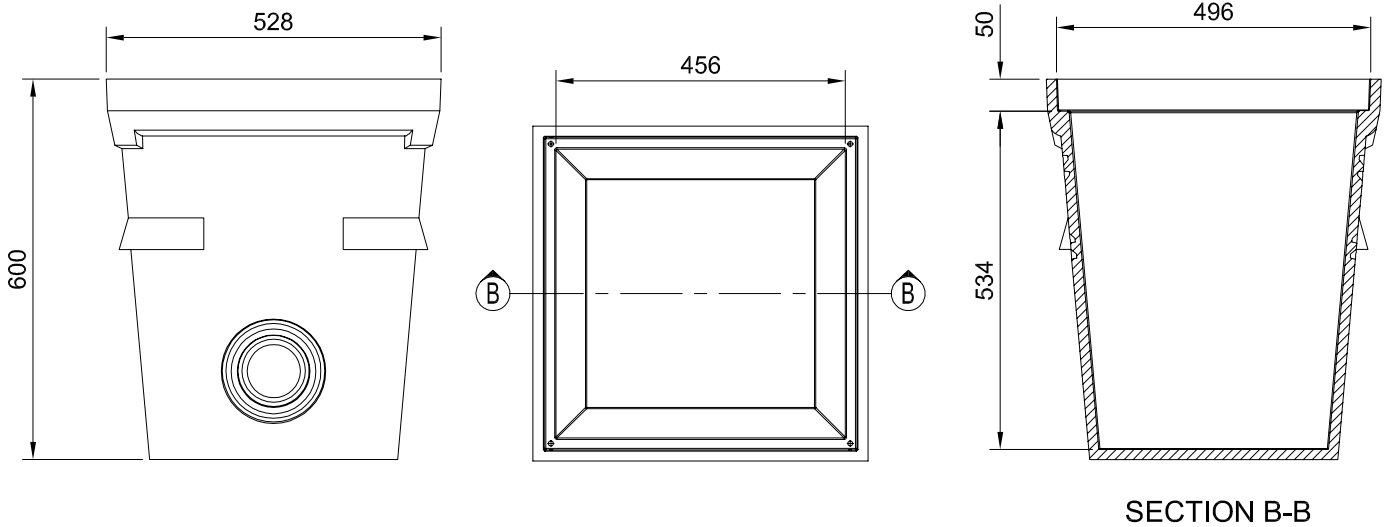
300 x 300 Riser



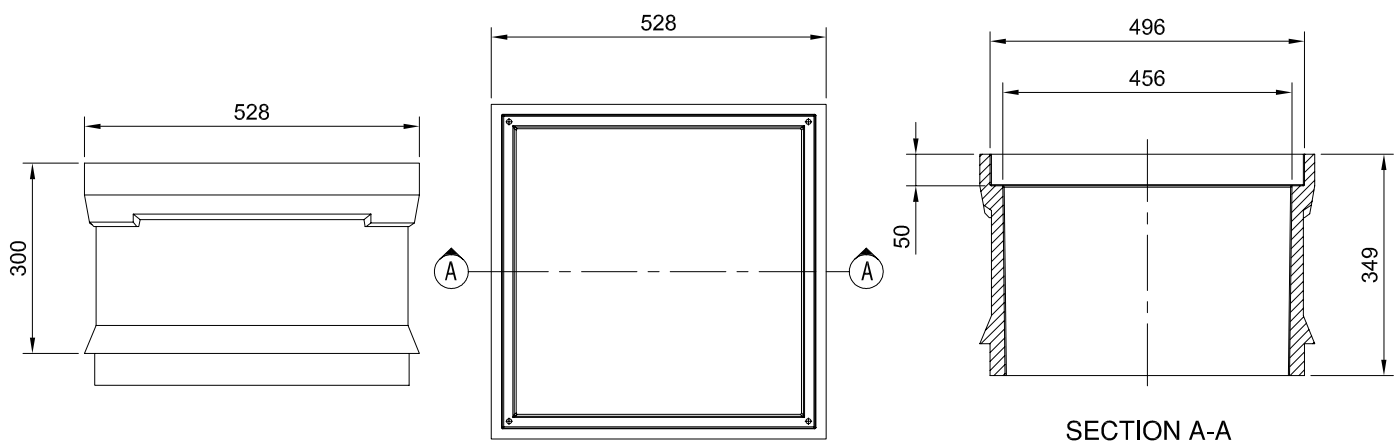
SECTION A-A

300 x 300 Pits & Risers

Code	Items	Class	Clear Opening (mm) L x W	Rebate (mm) L x W	Overall (mm) L x W	Height (mm)
PCP33	Pit		310 x 310	340 x 340	374 x 374	450
PCR33 (300)	Riser					300
PG33B	Grate Galv - Bicycle Safe	Class B				
PG33B-HP	Grate Galv - HEELPROOF™	Class B				
G33Di	Grate Cast Iron	Class D				
PC33A-CP	Cover - Chequer Plate	Class A				
PC33B-PC	Cover - Polymer Concrete	Class B				
Svelto HC4	Cover - Composite	Class B				
PI33C	Cover - GMS Paverfill	Class C				
A33D	Cover - Cast Iron Infill	Class D				
LA33D	Cover - Cast Iron Solid	Class D				

ELECTROFLO™ POLYMER CONCRETE PITS AND RISERS**450 x 450**

450 x 450 Pit



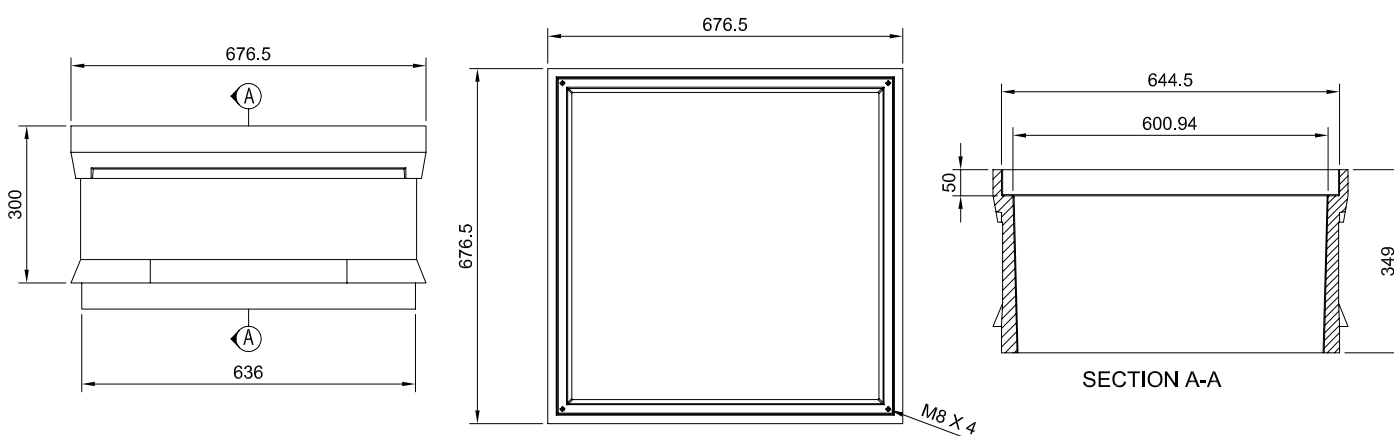
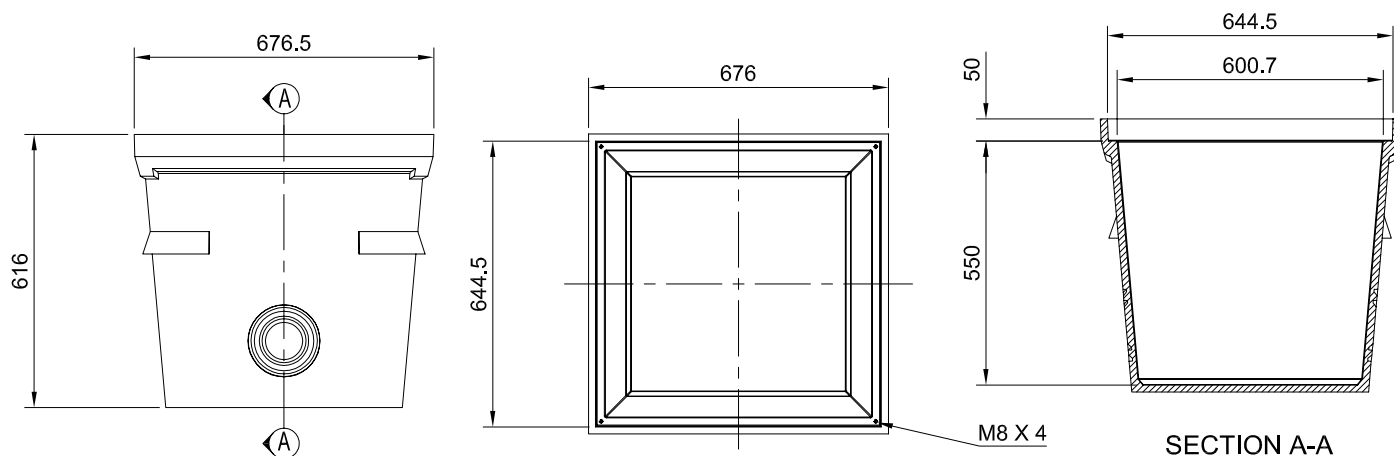
450 x 450 Riser

450 x 450 Pits & Risers

Code	Items	Class	Clear Opening (mm) L x W	Rebate (mm) L x W	Overall (mm) L x W	Height (mm)
PCP44	Pit		456 x 456	496 x 496	528 x 528	600
PCR44 (300)	Riser					300
PG44B	Grate Galv - Bicycle Safe	Class B				
PG44B-HP	Grate Galv - HEELPROOF™	Class B				
G44Di	Grate Cast Iron	Class D				
PC44A-CP	Cover - Chequer Plate	Class A				
PC44B-PC	Cover - Polymer Concrete	Class B				
Svelto HC6	Cover - Composite	Class B				
PI44C	Cover - GMS Paverfill	Class C				
A44D	Cover - Cast Iron	Class D				
LA44D	Cover - Cast Iron Solid	Class D				

ELECTROFLO™ POLYMER CONCRETE PITS AND RISERS

600 x 600



600 x 600 Pits & Risers

Code	Items	Class	Clear Opening (mm) L x W	Rebate (mm) L x W	Overall (mm) L x W	Height (mm)
PCP66	Pit		600 x 600	645 x 645	677 x 677	615
PCR66 (300)	Riser					300
PG66B	Grate Galv - Bicycle Safe	Class B				
PG66B-HP	Grate Galv - HEELPROOF™	Class B				
G66Di	Grate Cast Iron	Class D				
PC66A-CP	Cover - Chequer Plate	Class A				
PC66B-PC	Cover - Polymer Concrete	Class B				
Svelto HC7	Cover - Composite	Class B				
PI66C	Cover - GMS Paverfill	Class C				
A66D	Cover - Cast Iron	Class D				
LA66D	Cover - Cast Iron Solid	Class D				

ELECTROFLO™ POLYMER CONCRETE PITS AND RISERS

900 x 900



900 x 900 Pits & Risers

Code	Items	Class	Clear Opening (mm) L x W	Rebate (mm) L x W	Overall (mm) L x W	Height (mm)
PCP99	Pit		900 x 900	945 x 945	977 x 977	615
PCR99 (300)	Riser					300
PG99B	Grate Galv - Bicycle Safe	Class B				
PG99B-HP	Grate Galv - HEELPROOF™	Class B				
G99Di	Grate Cast Iron	Class D				
PC99A-CP	Cover - Chequer Plate	Class A				
PC99B-PC	Cover - Polymer Concrete	Class B				
Svelto HC9	Cover - Composite	Class B				
PI99C	Cover - GMS Paverfill	Class C				
A99D	Cover - Cast Iron	Class D				
LA99D	Cover - Cast Iron Solid	Class D				

Notes





ejco.com



Americas

1 800 874 4100

Europe

including the Middle
East and Africa

33 3 44 08 28 00

Asia-Pacific

61 7 3216 5000

Australia

QLD

9 Delta St,
Geebung, QLD 4034
Ph: 07 3216 5000
Fax: 07 3216 5222

NSW

140 Hassall St,
Wetherill Park, NSW 2164
Ph: 02 9757 3862
Fax: 02 9757 3863

VIC

1/40 Healey Road,
Dandenong South, VIC 3175
Ph: 03 9792 5144
Fax: 03 9792 5177

WA

18 Boulder Road,
Malaga, WA 6090
Ph: 08 9209 2930
Fax: 08 9209 2077

Registered
Marks



HEELPROOF™
NORINCO®
TELECOM™
SELFLEVEL™
ERMATIC®
CHILDSAFETY®

STORMTROOPER™
NORGUSS™
CABLECOM®
NORLONG™
MAXIMO™
AQUERA™

Channel, Grate & Pit Systems
Asia-Pacific 2015



Quality
ISO 9001



OceanaMark
AS3996
Certification